

# SPEC SHEET + MEASUREMENTS



## Russell Outdoors™ Realtree® Atlas Soft Shell. RU600

### Product photo



Modern, lightweight and ideal as a work-to-play outer layer for those who love camping, fishing and other outdoor pursuits. Brushed fleece interior is perfect for layering over a tee on a cool spring morning or crisp fall day.

- 8.4-ounce, 100% polyester with TPU laminate and brushed fleece interior
- Durable water repellent (DWR) finish
- 5K/5K weather protection
- Realtree EDGE® print
- Chest pocket and zippered hand pockets with molded zippers and brushed metal pulls
- Exterior embossed faux leather tab at hem

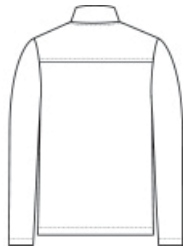
### CARE INSTRUCTIONS

Machine Wash Cold. Do Not Use Softener. Only Non-Chlorine Bleach When Needed. Tumble Dry Low. Do Not Iron. Do Not Dry Clean.

### Sketches



front



back

# SPEC SHEET + MEASUREMENTS



Russell Outdoors™ Realtree® Atlas Soft Shell. RU600

## PRODUCT MEASUREMENTS

	XS	S	M	L	XL	2XL	3XL	4XL
Body Length at Back	27	28	29	30	31	32	32 1/2	33
Chest	19 3/4	21 1/4	22 3/4	24 1/4	25 3/4	27 1/4	29 1/4	31 1/4
Sleeve Length from Center Back	34 3/4	35 1/2	36 1/4	37	37 3/4	38 1/2	39 1/4	40

**Body Length at Back:** Measured from high point shoulder to finished hem at back.

**Chest:** Measured across the chest one inch below armhole when laid flat.

**Sleeve Length from Center Back:** Measure from Center Back neck to shoulder point to sleeve hem.

## SIZE CHARTS

	XS	S	M	L	XL	2XL	3XL	4XL
Chest	32-34	35-37	38-40	41-43	44-46	47-49	50-53	54-57

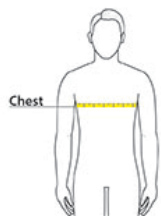
# SPEC SHEET + MEASUREMENTS



Russell Outdoors™ Realtree® Atlas Soft Shell. RU600

## HOW TO MEASURE

---



### CHEST

Measure under the arm and around the fullest part of the chest with arms down, keeping tape horizontal.

## COLORS

---



Realtree Edge